

Imprinted Genes That Regulate Early Mammalian Growth Are Coexpressed in Somatic Stem Cells

Jonathan S. Berg^{1,2,3,4*}, Kuanyin K. Lin^{2,3}, Corinne Sonnet², Nathan C. Boles³, David C. Weksberg¹, Hoang Nguyen², Lowenna J. Holt⁵, Danny Rickwood⁶, Roger J. Daly⁶, Margaret A. Goodell^{1,2,3,4*}

1 Department of Molecular and Human Genetics, Baylor College of Medicine, Houston, Texas, United States of America, **2** Stem Cells and Regenerative Medicine Center, Baylor College of Medicine, Houston, Texas, United States of America, **3** Interdepartmental Program of Cell and Molecular Biology, Baylor College of Medicine, Houston, Texas, United States of America, **4** Department of Pediatrics, Baylor College of Medicine, Houston, Texas, United States of America, **5** Diabetes and Obesity Research Program, Garvan Institute of Medical Research, Sydney, Australia, **6** Cancer Research Program, Garvan Institute of Medical Research, Sydney, Australia

Abstract

Lifelong, many somatic tissues are replenished by specialized adult stem cells. These stem cells are generally rare, infrequently dividing, occupy a unique niche, and can rapidly respond to injury to maintain a steady tissue size. Despite these commonalities, few shared regulatory mechanisms have been identified. Here, we scrutinized data comparing genes expressed in murine long-term hematopoietic stem cells with their differentiated counterparts and observed that a disproportionate number were members of the developmentally-important, monoallelically expressed imprinted genes. Studying a subset, which are members of a purported imprinted gene network (IGN), we found their expression in HSCs rapidly altered upon hematopoietic perturbations. These imprinted genes were also predominantly expressed in stem/progenitor cells of the adult epidermis and skeletal muscle in mice, relative to their differentiated counterparts. The parallel down-regulation of these genes postnatally in response to proliferation and differentiation suggests that the IGN could play a mechanistic role in both cell growth and tissue homeostasis.

Citation: Berg JS, Lin KK, Sonnet C, Boles NC, Weksberg DC, et al. (2011) Imprinted Genes That Regulate Early Mammalian Growth Are Coexpressed in Somatic Stem Cells. *PLoS ONE* 6(10): e26410. doi:10.1371/journal.pone.0026410

Editor: Renee A. Reijo Pera, Stanford University, United States of America

Received: June 22, 2011; **Accepted:** September 26, 2011; **Published:** October 19, 2011

Copyright: © 2011 Berg et al. This is an open-access article distributed under the terms of the Creative Commons Attribution License, which permits unrestricted use, distribution, and reproduction in any medium, provided the original author and source are credited.

Funding: This study was supported by grants from the National Institutes of Health (HL086223 to Dr. Berg and DK58192, AG034451, and DK060445 to Dr. Goodell, and EB005173, P50CA126752, and 1RC2AG036562). The funders had no role in study design, data collection and analysis, decision to publish, or preparation of the manuscript.

Competing Interests: The authors have declared that no competing interests exist.

* E-mail: goodell@bcm.edu

† These authors contributed equally to this work.

‡ Current address: Department of Genetics, The University of North Carolina at Chapel Hill, Chapel Hill, North Carolina, United States of America

Introduction

Somatic stem cells are collectively defined by their ability to self-renew and to differentiate to replenish tissue throughout adulthood. Some somatic stem cells, such as hematopoietic stem cells (HSC), can differentiate into a plethora of cell types, whereas others are much more limited, maintaining a quite restricted cell population in a particular tissue, such as the satellite cells of the muscle. In contrast to embryonic stem cells, somatic stem cells are inherently restricted in their differentiation potential, generally only replenishing the tissue type from which they are derived. Another key feature of many somatic stem cells is that they are generally considered to be quiescent, dividing infrequently, but driven into cycle during periods of tissue regeneration or self-renewal. While this is broadly the case for some canonical stem cells, such as hematopoietic stem cells [1], satellite cells [2], and epidermal stem cells [3], some, such as intestinal stem cells [4] and neural progenitor cells (NPCs) [5] do not fit this stereotype.

Systematic approaches to identify “stemness factors” common to embryonic, neural, and hematopoietic stem cells [6,7] were unsuccessful [8], possibly owing to the very distinct lifestyle that ES cells possess in comparison to somatic stem cells. Nevertheless, as more somatic stem cell populations have been uncovered over the

past decade, the question of whether somatic stem cells, in general, share common regulatory mechanisms has repeatedly been revived. From empirical studies, developmental pathways such as the Wnt and Notch signaling pathway have been shown to impact cell fate decisions in several stem cell types [9,10], however specific common regulatory genes have still not been uncovered.

Another approach is to determine the factors that make stem cells distinct from their differentiated progeny by comparing the expression profiles of somatic stem cells to those of their differentiated counterparts, for example, of HSCs to their differentiated blood progeny [11]. In this study, we found in HSCs an intriguing enrichment for genes that were regulated by genomic imprinting.

Imprinting is an epigenetic phenomenon in which certain genes are expressed in a monoallelic fashion, depending on their parental origin. Imprinted genes are widely considered to have critical roles in embryonic development [12,13], and alterations of their expression are responsible for several human genetic syndromes [14]. The mono-allelic expression makes the imprinted genes vulnerable to inactivation through mutation or epigenetic silencing, presumably accounting for their low prevalence, estimated at less than 1% of all human and mouse genes [15]. Nevertheless, genomic imprinting has been maintained through-

out mammalian evolution, perhaps as a mechanism for balancing maternal and paternal interests with regard to the growth of offspring, a hypothesis referred to as the “kinship theory” or “conflict hypothesis” [13].

Here, we show a subset of imprinted genes, represented in a so-called imprinted gene network (IGN) [16] that are down-regulated postnatally [17], are predominantly expressed in somatic stem cells, relative to their differentiated progeny. This observation leads to the suggestion, explored here, that the IGN could play a broad role in regulating multiple somatic stem cells.

Results

Members of the imprinted gene network (IGN) that are developmentally silenced in somatic tissues remain expressed in long-term hematopoietic stem cells

Recognition that several imprinted genes were represented in the gene expression profile we had generated for mouse long-term repopulating hematopoietic stem cells (LT-HSCs) [11] led us to ask whether such genes might play a critical role in the regulation of LT-HSCs and perhaps of other adult stem cells as well. Close examination of the data for each of the hematopoietic cell types previously analyzed in our lab by microarray revealed that imprinted genes, although constituting only 65 (~0.33%) of the ~20,000 genes represented on our expression microarrays, accounted for 8 (3.2%) of the 253 genes in a stringently annotated list of “fingerprint” genes expressed exclusively in LT-HSCs, a nearly 10-fold enrichment relative to that expected by chance ($P < 0.0001$ by Fisher’s exact test). Five other imprinted genes were expressed predominantly in LT-HSCs with much lower expression in a small subset of differentiated lineages. Thus, an unusually high proportion of known imprinted genes are preferentially expressed in LT-HSCs (Figure 1).

The imprinted genes exclusively or predominantly expressed in LT-HSCs bear a striking resemblance to a specific subset of imprinted genes referred to as the imprinted gene network (IGN) [16]. First identified through a meta-analysis of mouse gene-expression datasets, this group of genes is thought to be critically involved in the control of fetal and early postnatal growth, becoming down-regulated with the increasing age of the organism and slowing of the somatic growth rate [17]. Although others have reported subsets of this network (Table 1) [18,19,20], their link to a

formal genetic program was often not recognized. Moreover, a number of the differentially expressed genes identified by our microarray analysis [11] are not part of the IGN as originally defined by Varrault et al [16]. Finally, we examined our previous microarray data for the 58 genes reported by Finkielstein et al. [21] to be down-regulated >3-fold between week-1 and week-4 of postnatal growth in heart, kidney and lung; 26 (44.8%) had flat expression profiles across hematopoietic populations, 13 genes (22.4%) were expressed in many or all lineages, and 10 genes (17.2%) were predominantly expressed in myeloid lineages. Quite strikingly, while the list of 58 genes reported by Finkielstein et al. contains 5 members of the IGN, it contains only 4 non-imprinted genes that are expressed predominantly in LT-HSCs (*Sox4*, *Zfp184*, *Emelin1*, and *Smarca1*). Thus, the genes that are down-regulated with age are not simply enriched for LT-HSC “fingerprint” genes, but are rather enriched for members of the IGN. These findings suggest that a specific group of imprinted genes, critical for embryonic growth but silenced in somatic tissues during early postnatal growth, remain expressed in LT-HSCs and may participate in the regulation of LT-HSC function. To explore this possibility, we selected 10 imprinted genes known to be coregulated during embryonic growth [16,18,19,20], including three with indeterminate microarray expression (*Cdkn1c*, *Igf2*, and *Mest*) that were previously linked to hematopoiesis [22,23,24,25]. Quantitative real-time PCR (Q-RT-PCR) was performed for these genes (*Cdkn1c*, *Dlk1*, *Grb10*, *Gtl2*, *H19*, *Igf2*, *Mest*, *Ndn*, *Peg3*, and *Plagl1*) in LT-HSCs and representative differentiated lineages, which had been purified independently of the original microarray study. This analysis showed that the coexpressed genes were at least 30-fold more abundant in LT-HSCs than in their differentiated progeny, with the exception of *Igf2*, *Mest*, and *Plagl1*, which retained some expression in T-cells (Figure 2A).

We next examined the expression of the genes in minimally differentiated progenitor populations not previously studied with our microarrays, including short-term hematopoietic stem cells (ST-HSCs), multipotent progenitors (MPPs), common lymphoid progenitors (CLPs), common myeloid progenitors (CMPs), myeloid-erythroid progenitors (MEPs), and granulocyte-macrophage progenitors (GMPs). Interestingly, the pattern of gene expression by Q-RT-PCR was more varied among ST-HSCs and progenitors than in LT-HSCs (Figure 2B), suggesting that these imprinted genes may have different roles during the earliest phases of

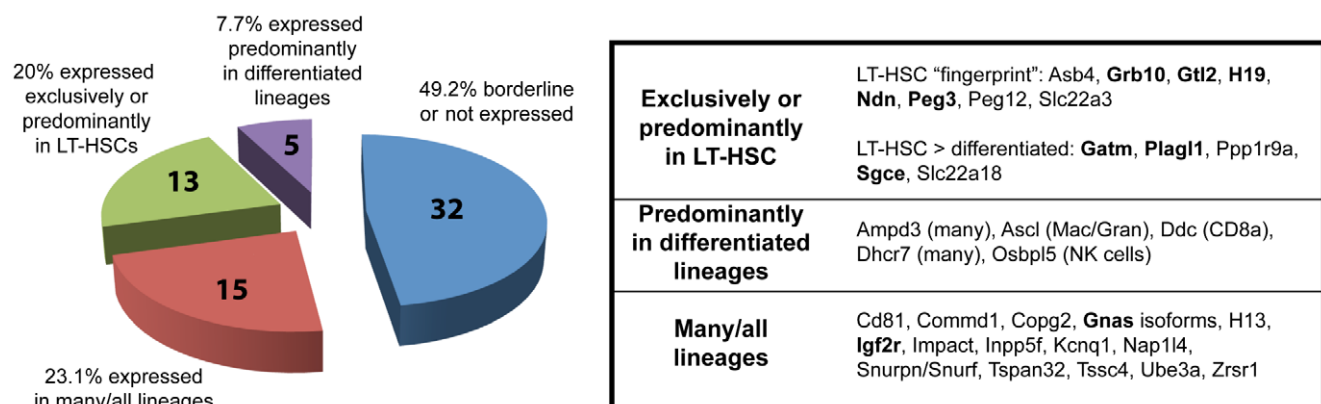


Figure 1. Summary of microarray analysis of imprinted gene expression in hematopoiesis. Microarray data from mouse LT-HSCs and differentiated lineages [11] were analyzed for the expression of known imprinted genes. The chart (left) shows the distribution of genes according to the specificity of their lineage distribution; the individual genes in each expression category are listed to the right (genes previously identified as being part of the IGN, as defined by Varrault et al. [16] are noted in bold-face type). Supplementary information is provided in Table S1, showing the description of the core IGN genes in this study. doi:10.1371/journal.pone.0026410.g001

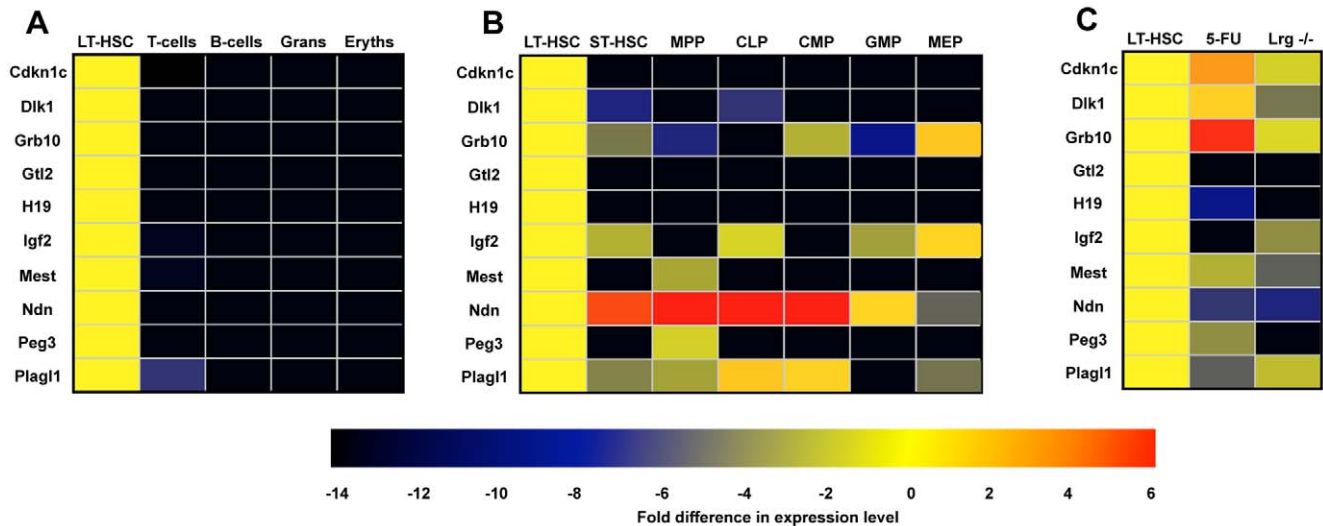


Figure 2. Real-time PCR analysis of imprinted gene expression in hematopoietic cells. Hematopoietic cell populations were isolated, and the expression of 10 core imprinted genes was determined by Q-RT-PCR. The data representing at least two independently isolated biological replicates for each population are shown as heat maps showing the fold difference in gene expression for each cell type compared to LT-HSCs. (A) Terminally differentiated cell populations (T-cells, B-cells, granulocytes, and erythrocytes) vs. HSCs. (B) Hematopoietic progenitor populations vs. LT-HSCs. (C) LT-HSC expression under conditions of acute (5-FU) or chronic (*Lrg47*^{-/-}) proliferative stress vs. quiescence. Proliferating LT-HSCs were collected on day 6 post 5-FU treatment or from *Lrg47*^{-/-} mice, and imprinted gene expression was determined by Q-RT-PCR. doi:10.1371/journal.pone.0026410.g002

hematopoietic development. For example, expression of *Ndn* is several fold higher in the early progenitor cell populations than in LT-HSCs, which is consistent with a recent report indicating a possible role for *Ndn* in cell cycle control in hematopoietic stem and progenitor cells [26].

Monoallelic expression dependent on the parent of origin is a hallmark of imprinted genes. However, certain imprinted genes become biallelically expressed in adult tissues, and we are unaware of any studies that have analyzed imprinting in somatic stem cells. We therefore determined the mode of expression of *Dlk1*, *Gtl2*, *H19*, *Igf2* and *Peg3* in LT-HSCs isolated from the F1 progeny of Castaneous and C57Bl/6 parents (Figure S1A). Analysis of coding SNPs allowed us to identify the parent-of-origin for the transcripts of these five genes, showing that the expressed allele was concordant with the reported imprinting pattern for each gene, confirming that monoallelic expression is generally retained in LT-HSCs (Figure S1 and Table S2).

The abundance of IGN gene expression correlates with functional stem cell properties

Contrasting roles have been attributed to paternally and maternally biased alleles in diverse cellular processes [27]. Experimental disruption of imprinting can induce dramatic phenotypic changes in growth leading to malignant transformation [28], while imprinted genes are frequently dysregulated in tumorigenesis [19,29], including myeloproliferative diseases [23,30,31] (summarized in Table S1). Since one of the hallmarks of stem cells is their capacity to replenish a tissue by responding to short-term and long-term signals, we investigated whether expression of our core group of imprinted genes might be involved in acute or chronic changes (or both) in the LT-HSC response to proliferative stress, by assessing their expression under two distinct conditions that mimic an acute response to injury and chronic overstimulation, respectively (Figure 2C).

We first used 5-fluorouracil (5-FU) to ablate cycling short-term bone marrow progenitor cells, and thus to stimulate transient

proliferation of LT-HSCs (an injury from which the cells completely recover) [32]. At 6 days after 5-FU treatment, when the cells are maximally proliferative [32], *Gtl2* was undetectable, *Igf2* and *Peg3* were downregulated more than 3-fold, and *Cdkn1c* expression was decreased 2-fold, while *Grb10* showed a 2.8-fold increase in expression. We next investigated the effect of chronic perturbation of LT-HSCs using mice deficient for *Irgm* (encoding *Lrg47*, an interferon-inducible GTPase), which have decreased numbers of LT-HSCs that exhibit sustained high proliferation, resulting in failure to engraft in bone marrow transplantation assays [33]. By Q-RT-PCR analysis, *Gtl2*, *H19*, and *Peg3* were undetectable, *Dlk1*, *Mest* and *Ndn* were downregulated >4-fold, and *Igf2* and *Plagl1* showed modest decreases in expression. *Gtl2* is a host transcript for a number of miRNAs, and has recently been shown to inhibit induced pluripotential stem cell formation when aberrantly silenced [34]. We verified that multiple miRNAs from the *Gtl2* locus are also expressed in LT-HSCs and several of them are strikingly down-regulated in LT-HSCs deficient for *Irgm* (Figure S2).

Thus, two conditions that disrupt LT-HSC homeostasis (one pharmacologic and one genetic) perturb the expression of a central group of imprinted genes known to be involved in embryonic and early postnatal growth. Acute proliferative stress perturbs the expression of only a subset of the imprinted genes, while chronic proliferation due to *Irgm* deficiency (in which LT-HSC function is more severely compromised) correlates with greater alteration of the imprinted genes, including several miRNAs. Whether the above findings indicate a direct mechanistic relationship between the change in proliferative status and altered gene expression or merely capture genetic epiphenomena associated with an altered LT-HSC state is unclear.

We hypothesize that the retained expression of the imprinted genes in hematopoietic stem/progenitor cells allows a poised state of growth control that permits rapid response to growth stimulatory signals in this special cell population. This appears to be a different mechanism than the control of proliferation in differentiated hematopoietic lineages, since our previous micro-

**Table 1.** Putative members of the IGN identified in six different studies.

Gene	Previous studies					This study				
	Varrault (2006) [16] Microarray meta-analysis	Yan (2003) [18] Muscle regeneration	Dekel (2006) [19] Kidney progenitors	Lui (2008) [17] Downregulated with age	Gabory (2009) [20] Transgenic H19 overexpression	Hematopoietic system (microarray and Q-RT-PCR data)			Muscle satellite cells	Skin stem cells
						LT-HSCs	Progenitors	Differentiated		
Asb4						✓		–		
Cdkn1c	✓	✓		✓	✓	✓	–	–	✓	✓
Dcn	✓				✓					
Dlk1	✓		✓	✓	✓	✓	✓	–	✓	✓
Gatm	✓					✓		+/-		
Gnas	✓				✓	✓		✓		
Grb10	✓			✓		✓	✓	–	✓	✓
Gtl2	✓			✓		✓	–	–	✓	–
H19	✓	✓		✓	✓	✓	–	–	✓	✓
Igf2	✓	✓	✓	✓	✓	✓	✓	–	✓	✓
Igf2r	✓				✓	✓		✓		
Impact						✓		+/-		
Mest	✓	✓	✓	✓		✓	+/-	–	✓	✓
Ndn	✓			✓		✓	✓	–	✓	✓
Nnat			✓							
Peg3	✓	✓	✓	✓	✓	✓	+/-	–	✓	✓
Peg10			✓							
Peg12						✓		–		
Plagl1	✓	✓		✓		✓	✓	+/-	✓	✓
Ppp1r9a						✓		–		
Rtl1					✓					
Sgce	✓					✓		+/-		
Slc22a3,						✓		–		
Slc22a18						✓		–		
Slc38a4	✓			✓	✓					

The ten members of the IGN studied in this manuscript are indicated in bold. Check marks (✓) indicate positive identification of IGN members by gene expression assays. Absence of expression is not explicitly indicated except in examples from our study, where differential expression was observed by microarray, or Q-RT-PCR failed to detect amplification (–). Variable expression (observed in some but not all cell types) is indicated (+/–).
doi:10.1371/journal.pone.0026410.t001

arrays included proliferating (e.g. activated T-cells and nucleated erythroid lineages) and non-proliferating cells that would have retained some potential for division (e.g. quiescent T-cells, and monocytes). If the IGN were only correlated with quiescence versus proliferation, we would expect to see a different pattern than what was observed.

Imprinted gene expression is highly enriched in multiple somatic stem cells, including murine muscle and epidermal, and human epidermal and hematopoietic stem cells

The imprinted genes analyzed here represent 10 of the 11 imprinted genes identified in a study that used microarrays to detect genes that were downregulated in murine whole kidney, heart, and lung from birth to maturity [17]. This finding, combined with our data from LT-HSCs, suggests that our group of imprinted genes are broadly expressed in embryonic and rapidly growing postnatal tissues, but then becomes restricted to tissue-specific stem cells, which retain the license to proliferate and differentiate to meet specific organismal demands. To test this concept, we studied additional tissues and stem cells. After confirming selective expression in human CD34⁺ stem cells from whole bone marrow (Figure 3A) and cord blood (data not shown) we found that all of the 10 genes tested were highly expressed in whole mouse postnatal day-5 (P5) skeletal muscle and were downregulated >100-fold in whole adult (6- to 8-week-old) muscle (Figure 3B). However, each imprinted gene was expressed in muscle satellite cells isolated from either P5 or adult mice with relatively few differences (data not shown). Importantly, except for *Peg3*, *H19*, and *Gtl2*, the imprinted genes were expressed at least 10-fold more highly in quiescent satellite cells than in whole muscle (Figure 3C). In skin, 9 of the 10 imprinted genes were detected in epidermal stem cells (CD34⁺ integrin α 6⁺ keratinocytes), with *Cdkn1c*, *Dlk1*, *Grb10*, *Mest*, *Ndn* and *Peg3* showing at least 8-fold higher expression levels in stem vs. non-stem cells (Figure 3D). These results clearly demonstrate that the pattern of imprinted gene expression is largely retained in human hematopoietic stem cells, as well as two other murine stem cell compartments. The minor variability of this pattern among different somatic stem cells could be due to cell type-dependent differences in the composition of the proposed regulatory network, or to heterogeneity within the muscle satellite cell and skin stem cell samples (which may represent a mixture of long-term and short-term stem and progenitor cells).

To understand whether the preferential expression of IGN genes in stem cells are preserved in other somatic stem cells, we used Gene Set Enrichment Analysis (GSEA) to assess the expression of imprinted genes among other datasets available via the NCBI Gene Expression Omnibus (Table 2). This method detected enrichment for 24 imprinted genes (16 previously assigned to an IGN [16] as well as 8 identified by our microarray analysis [11]) in LT-HSCs compared to differentiated hematopoietic cells, both in our previous microarrays and an independently derived set of genes expressed during mouse hematopoiesis [35]. We also analyzed human microarray datasets and found that this set of imprinted genes was strikingly enriched in normal human HSCs compared to a putative leukemia stem cell population (AML0-SCs; Figure 3E) [36] and in human hair follicle stem cells (Figure 3F) [37]. Intriguingly, GSEA also revealed enrichment of imprinted gene expression in mouse embryonic fibroblasts (MEFs) compared to embryonic stem (ES) cells and neural progenitor cells (NPCs) [5]. Although NPCs are considered somatic stem cells, they are most important during embryonic development and do

not share more than a few of the hallmarks of other somatic stem cells (such as being generally quiescent and participating in lifelong renewal of tissues). The reason for the lack of enrichment of imprinted genes in NPCs is unclear, but may simply reflect a different mechanism of regulation in this distinct type of somatic stem cell. Finally, when ES cells were allowed to differentiate in vitro [38], the expression of imprinted genes was higher in the embryoid bodies (EBs; Figure 3G), indicating that these genes regulate growth potential in the embryo but are not, as a group, part of the pluripotency program executed by ES cells, even though some individual members of the network may be expressed in, and even important for, ES cells. These results reveal an important distinction between ES and adult stem cells and could explain why a network of coexpressed imprinted genes was not identified as an integral component of the stem cell molecular signature in earlier studies [6,7].

Discussion

Many tissues undergo lifelong replenishment by rare specialized adult stem cells, which are generally quiescent, occupy unique niches, and respond rapidly to injury in order to maintain the size of a particular organ or tissue. We previously observed that a group of developmentally important imprinted genes are preferentially expressed in mouse long-term hematopoietic stem cells (LT-HSCs) compared with their differentiated counterparts [11]. Here we show that subsets of these “fingerprint” genes are core members of a network of coregulated imprinted genes, which have been implicated in the control of embryonic and early postnatal growth [16,17]. These genes are expressed in mouse stem and progenitor cells of the hematopoietic system, skin, and skeletal muscle, and their expression is significantly lower in the differentiated progeny of these cells and in perturbed LT-HSCs. Human hematopoietic stem cells also preferentially express these genes. The imprinted genes identified in this study are highly expressed during embryonic and early postnatal life, silenced as the organism nears its adult body size [17], but remain expressed in at least three types of somatic stem cells (Figure 4A). We speculate that these imprinted genes represent a special subset of the LT-HSC “fingerprint” genes and that perhaps other somatic stem cells likewise express a larger set of “stemness” genes comprised of lineage-specific developmental regulatory genes in addition to the smaller subset of IGN members shared with other somatic stem cells.

These data for the first time implicate genes associated with embryonic and early postnatal growth [17] in regulation of somatic stem cells. Such a parallel role may not be entirely surprising, as the requirements for rapid proliferation and expansion of somatic stem cells in response to external cues may be similar to those imposed by embryonic and early postnatal development. Interestingly, maternally-expressed and paternally-expressed genes with opposing roles in growth regulation are represented in the IGN, suggesting a balance in growth-promoting and growth-restraining forces within the network, perhaps at play in somatic stem cells (Figure 4B and Table S1). The proteins encoded by these imprinted genes are sufficiently diverse to influence stem cells via a variety of strategies, including endocrine/paracrine signaling and signal transduction, developmental morphogenesis, regulation of apoptosis, and cell cycle inhibition (Table S1), while *H19* and *Gtl2* noncoding RNA transcripts harbor micro-RNAs [39,40] that could modulate the expression of large numbers of target genes. Interestingly, the tumor suppressor p53, which was recently implicated in the regulation of HSC quiescence [41], appears to be functionally linked to several members of the IGN [41,42,43,44,45], again suggesting a central

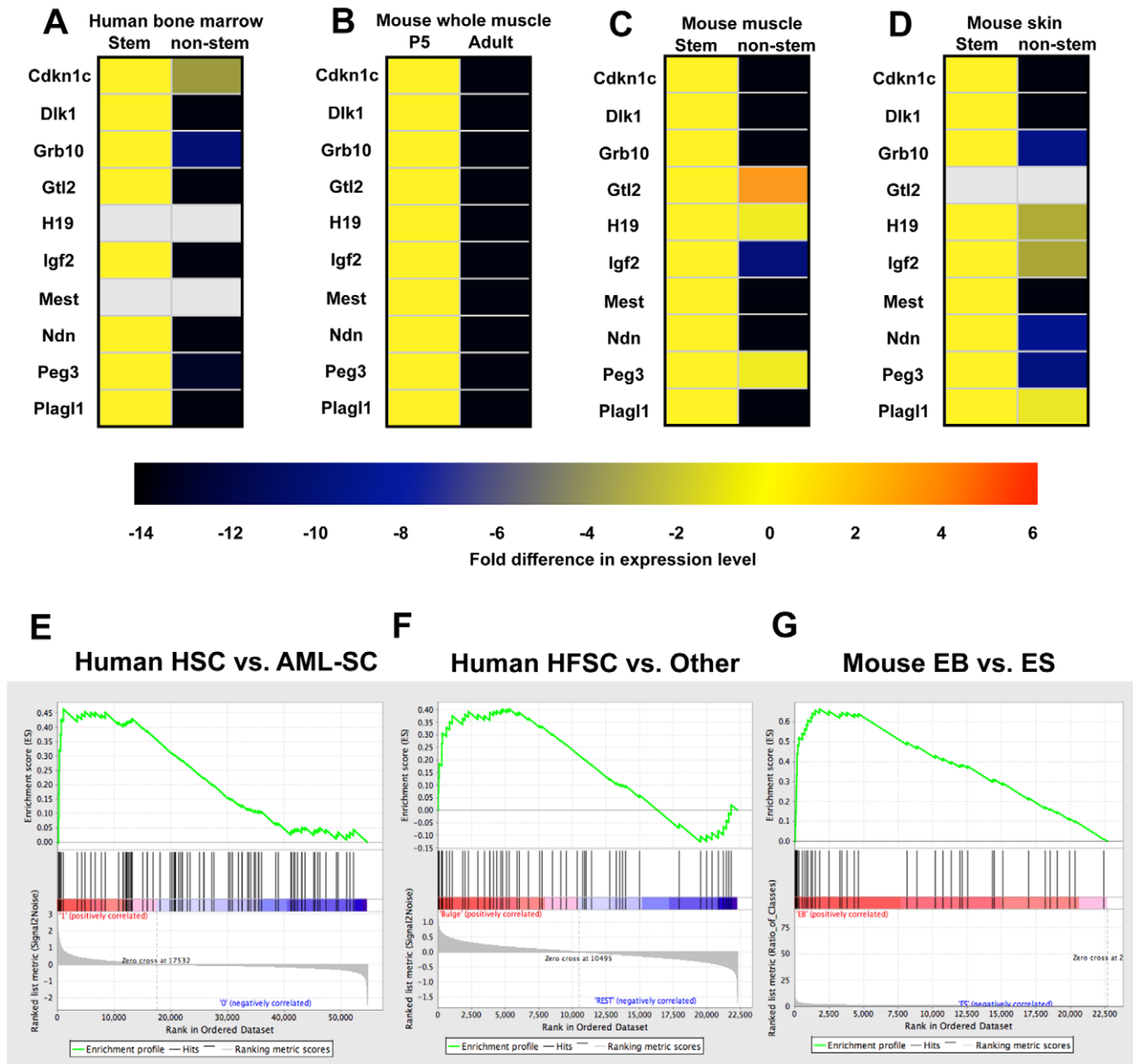


Figure 3. IG expression is retained in mouse and human somatic stem cell populations but not embryonic stem cells. The expression of imprinted genes was compared in (A) human bone marrow CD34+ vs. CD34- cells, (B) mouse whole muscle cells during skeletal muscle maturation from P5 to adulthood, (C) quiescent muscle satellite cells (SCs) vs. whole muscle (non-SCs), and (D) mouse skin stem cells vs. keratinocytes (non stem cells). The data representing at least two independently isolated biological replicates for each population are shown in heat maps representing fold differences in expression compared to the reference sample (yellow). Grey shading represents RT-PCR probes that failed to amplify in either population. (E-G) GSEA of gene expression in three of the cell population comparisons is shown in Table 1. Each example shows enrichment for the imprinted gene set, with an FDR q-value $\leq 5\%$ and an enrichment P-value ≤ 0.03 . EB, embryoid bodies; ESC, embryonic stem cells; HFSCs, hair follicle stem cells. Supplementary information is provided in Figure S1, showing the monoallelic expression nature of genes such as *Dlk1*, *Gtl2*, *H19*, *Igf2*, and *Peg3* in mouse HSCs, as well as Table S2, showing the SNPs used for the analysis of monoallelic expression. doi:10.1371/journal.pone.0026410.g003

role for imprinted genes in the regulation of cellular growth. Together, these findings link a putative imprinted gene network with the regenerative capacity of adult stem cells, offering a possible mechanism for influencing organismal size by coordinating post-natal growth potential.

A “network” implies an interconnected group of genes whose individual changes in expression can influence the expression or function of the remaining genes. Indeed, overexpression of *Plagl1* (*ζac1*) in the Neuro2a cell line or its knockout in liver resulted in

altered expression of some, but not all, IG members [16]. Similarly, *H19* expression appears to have a role in regulating the expression of certain IG members [20,46]. Whether these imprinted genes indeed function as a network *in vivo*, and what their individual roles are in stem cells, will have to be determined. The complementary and contrasting functions of the proteins encoded by the group of imprinted genes examined in this study may pose challenges to determining their function in stem cells, because alterations in the expression of single genes could be

Table 2. Enrichment of imprinted genes in somatic stem cell populations from published gene expression studies.

Dataset	GSEA Comparison	IGN gene set enrichment	Enrichment score	Nominal P-value ^a	FDR q-value	GEO accession	PMID
MOUSE							
HSC vs. 9 differentiated hematopoietic lineages [11]	HSC vs. all lineages	HSC	0.525	0.000	0.000	GSE6506	18371395
HSC vs. MPP and differentiated lineages [35]	HSC vs. (MPP+CD45+)	HSC	0.498	0.034	0.034	none	15989959
ES, MEF, NPC [5]	MEF vs. (ESC+NPC) NPC vs. ESC NPC vs. (ESC+MEF) ES vs. (MEF+NPC)	MEF n.s. n.s. n.s.	0.869	0.000	0.054	GSE8024	17603471
ESC differentiated into EBs [38]	ESC vs. EB	EB	0.663	0.000	0.045	GSE3223	15763554
HUMAN							
Bone marrow HSC vs AML stem cells [36]	HSC vs. AML	HSC	0.4663	0.034	0.043	GSE17054	19218430
Skin bulge cells vs non-bulge cells [37]	Bulge vs. nonbulge	Bulge	0.404	0.008	0.0327	GSE3419	16395407

Datasets from the Gene Expression Omnibus (GEO) that included stem cells together with a comparator population were used to examine enrichment for the IGN using Gene Set Enrichment Analysis (GSEA) with a custom imprinted-gene gene set. As originally defined [16], the IGN includes 16 genes, but for this analysis we also included additional imprinted genes that were specific to the LT-HSCs in our study [11]. This combined IGN-HSC list includes *Asb4*, *Cdkn1c*, *Dcn*, *Dlk1*, *Gatm*, *Gnas*, *Grb10*, *Gtl2*, *H19*, *Igf2*, *Igf2r*, *Impact*, *Mest*, *Ndn*, *Nnat*, *Peg3*, *Peg10*, *Peg12*, *Plagl1*, *Ppp1r9a*, *Sgce*, *Slc22a3*, *Slc22a18*, and *Slc38a4*.

^(a)The nominal P-value for all tests indicating 0.000 is <0.0001 (1000 permutations were used in each test). HSC, hematopoietic stem cells; MPP, multipotential progenitors; NPC, neural progenitor cells; ESC, embryonic stem cells; EB, embryoid bodies; AML, acute myeloid leukemia; FDR, false discovery rate; GEO, gene expression omnibus; PMID, pubmed ID; ns, not-significant.

doi:10.1371/journal.pone.0026410.t002

buffered by the actions of others. Indeed, one might predict that members of a coregulated network would work together to provide some level of redundancy, such that arbitrary elimination of a single gene would not be expected to disrupt the robustness of the entire program. Thus, manipulation of different combinations of imprinted genes, via double knock-outs or pools of siRNAs, may be needed to show major effects on somatic stem cell function. This concept may be borne out by the somewhat modest impact of KO of some individual members of the IGN, such as *neccdin* [26].

A key question for the future will be the nature of the coordinated regulation of imprinted genes. A number of studies have suggested they may exist in proximity in the nucleus [47], and a recent report indicates that there could be a link to chromatin regulators such as ATRX, MeCP2, and cohesin [48]. In addition, the polycomb repressive complex 1 protein, Bmi-1 may contribute to their regulation [49]. Further studies may reveal whether IGN member expression is truly interdependent, or controlled by some yet unknown master regulator.

An additional question is whether IGN expression in somatic stem and progenitor cells exists simply because of the collective functions of IGN members, or whether there is a unique contribution of imprinting in this case. Many investigators have speculated about the evolutionary conservation of imprinting, and one hypothesis put forward recently (the “Rheostat model”) is that genomic imprinting could confer evolutionary advantage if imprinted genes have evolved mechanisms for generating quantitative hypervariability in expression levels that can mediate phenotypic differences between individuals in a population [50]. According to this model, quantitative hypervariability in the expression of imprinted genes would be highly adaptive since alleles could be masked by imprinting (and thus protected from selection) and yet emerge and propagate in a population under favorable conditions. Genes controlling embryonic and postnatal growth, as well as adult stem cell function would be ideal candidates for this type of “rapid and reversible evolution” of phenotypes within a population, and thus perhaps expression of the IGN is retained in somatic stem cells in part due to the unique characteristics of genomic imprinting.

Finally, it remains to be determined whether our findings are broadly generalizable to other somatic stem cell populations. The three stem cell types studied here, hematopoietic, skin, and muscle, share similarities in that they are generally quiescent and require very specific interactions with a niche environment. A recent study generated a GFP-knock-in to the *Peg3* locus and found remarkably stem cell-specific expression of *Peg3* in multiple somatic tissues including skeletal muscle, bone marrow, CNS, testis, and others [51]. Another recent paper suggests components of the IGN may be present in lung stem cells [49]. However, it is possible that other somatic stem cell types, perhaps those with high turnover (e.g. intestinal stem cells [52]) may have quite different patterns of imprinted gene expression, or not share elements of this network at all.

It is intriguing that paternally and maternally expressed genes have opposing roles in fetal and placental development, forming the basis of the parental “conflict hypothesis” [12]. Stem cells could be viewed as having a similar conflict between growth promotion and restraint, regulated by intrinsic gene expression programs and external cues from the niche. This leads us to speculate that the diverse functional roles of imprinted genes in coregulated networks might have been co-opted during evolution to support the complexity of stem cell regulation of tissue homeostasis.

Methods

Analysis of microarray data

A list of mouse genes with known imprinting status was generated using four well-curated catalogs of imprinted genes (www.otago.ac.nz/IGC [15]; http://www.geneimprint.com/site/genes-by-species.Mus+musculus; WAMIDEX: https://atlas.genetics.kcl.ac.uk [53]; http://www.mousebook.org/catalog.php?catalog=imprinting). We excluded genes with evidence against imprinting in mouse, no report of imprinting status in mouse, or conflicting data. Genes classified as imprinted by three of the four catalogs were included in the analysis. Genes with multiple or

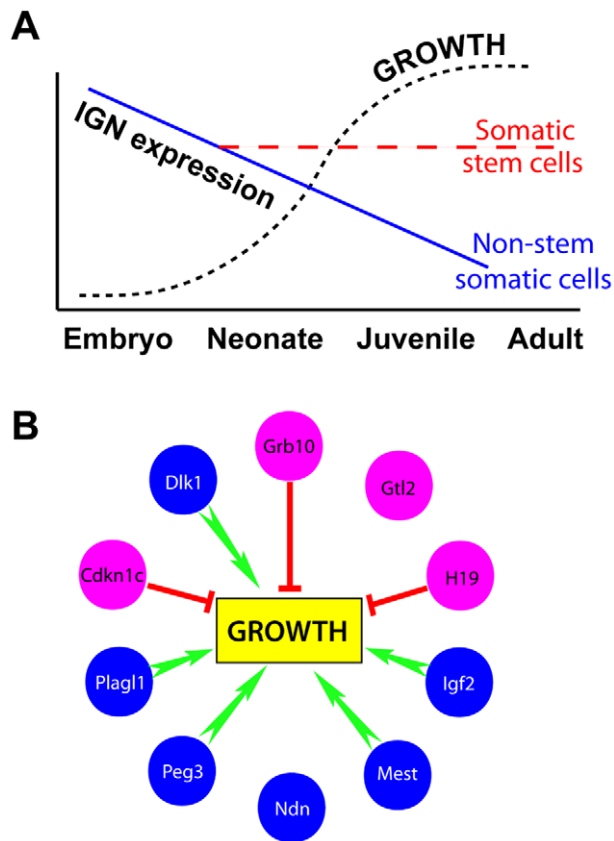


Figure 4. Models of IGF during development. (A) IGF members are highly expressed during embryogenesis but are downregulated in whole tissue as growth proceeds, while their expression is maintained in adult stem cell compartments. (B) Representation effects of the IGF on growth. Maternally expressed genes are depicted in pink and paternally expressed genes in blue. Overall effect on growth as determined by transgenic or knockout animal models is shown in green (promotion) or red (inhibition). doi:10.1371/journal.pone.0026410.g004

overlapping transcripts (eg., *Gtl2/anti-Rtl/Rian/Mirg*; *Snurpn/Snurf*; *Gnas* isoforms) were considered as a single “gene” for the purpose of probe annotation. By these criteria, 65 known mouse imprinted genes are represented by probes on the Affymetrix MOE430.2 microarrays used in previous expression profiling experiments. We then stringently hand-annotated the published list of genes specifically expressed in LT-HSCs (<http://franklin.imgen.bcm.tmc.edu/loligag/lf.php>), by removing duplicate probes and probes of unclear or conflicting significance (largely intronic probes or short, unannotated, unspliced transcripts; or genes represented by multiple probes having disparate microarray results). The final list contained 253 genes with high-quality evidence for specific expression in LT-HSCs.

Mice

Wild-type C57Bl/6 mice were bred at the AALAC-accredited animal facility (Animal Welfare Assurance Number A3823-1) at Baylor College of Medicine (BCM, Houston, TX). All procedures were approved by the BCM Institutional Animal Care and Use Committee (IACUC) and approved under protocol AN2234. For 5-FU treatment, mice were injected intraperitoneally with a 150 mg/kg dose of drug (Sigma) and killed at day 0 (untreated) or day 6 after injection. *Lrg47^{-/-}* mice were maintained in the BCM

animal facility as per our previous report [30]. All mice were treated according to an approved animal use protocol.

Isolation of cell populations

Skin stem cells were isolated from adult mice by trypsin floating of the back skins overnight, followed by scraping and cell straining to achieve a single cell suspension, and then exposed to directly conjugated primary antibodies against $\alpha 6$ integrin (CD49f, Pharmingen) and CD34 for 30 minutes on ice, followed by washing in PBS. Epidermal cells were gated for single events and viability, and then sorted according their expression of $\alpha 6$ -integrin and CD34. Hematopoietic and skin populations were purified with a MoFlo sorting flow cytometer (Dako) or FACSAria (BD Biosciences). Muscle satellite cells were obtained from freshly isolated tissue, minced in ice-cold Hanks Balanced Salt Solution (HBSS), and enriched by dissociation followed by a Percoll gradient separation [54]. Hematopoietic stem and progenitor cells were obtained from whole bone marrow and isolated by fluorescence-activated cell sorting (FACS) according to protocols used routinely in our lab [11,55]. LT-HSCs were selected either on the basis of the Hoechst efflux “side population” (SP) with cell surface staining for c-Kit⁺ and Sca-1⁺, and negative staining for lineage markers (Lin⁻: CD4, CD8, B220, Mac-1, Gr-1, and Ter-119), collectively termed “KSL”, or positive staining of CD150, negative for CD48 with KLS. For the 5-FU experiment, Mac-1 was left out of the lineage cocktail since this epitope emerges during proliferation. B-lymphocytes (CD19⁺, 33D1⁻) and T-lymphocytes (CD4⁺ or CD8⁺, CD25⁻, CD69⁻) were isolated from spleen while granulocytes (Gr-1⁺, 7/4 clone⁺, CD2⁻, CD5⁻, B220⁻, F4/80⁻, ICAM-1⁻, Ter-119⁻) and nucleated erythrocytes (Ter119⁺, CD3⁻, CD4⁻, CD8⁻, Mac1⁻, Gr1⁻, B220⁻) were isolated from WBM. ST-HSCs (non-SP, KSL, CD34^{high}, Flk2^{low}) and MPPs (non-SP, KSL, CD34^{high}, Flk2^{high}) were isolated from Hoechst-stained WBM. CLPs (KSL, Il7r α ⁺) were obtained from WBM as previously described [56]. The myeloid progenitors were contained within the Kit⁺, Il7r α ⁻, Sca-1⁻ and Lin⁻ population from WBM and further subsetted into CMPs (CD34⁺CD16/32⁻), MEPs (CD34⁻CD16/32⁻), and GMPs (CD34⁺CD16/32⁺) [57]. Flow cytometry antibodies were purchased from BD Bioscience and ebiosciences: APC-conjugated CD34, APCcy7-conjugated c-Kit, PEcy7-conjugated CD150, PEcy5 conjugated Lineage antibodies (CD4, CD8, B220, Ter119, Mac-1, and Gr-1) and FITC-conjugated CD48. Cells were analyzed using an LSRII (Becton Dickinson).

RNA isolation and Q-RT-PCR analysis

Total RNA was isolated from hematopoietic, muscle, and skin cells using RNAqueous (Ambion), followed by DNaseI treatment (Invitrogen) and first-strand synthesis using SuperScript III and priming with random hexamers. Q-RT-PCR was performed with pre-validated Taqman probe sets (Applied Biosystems) on a 7300 Real-Time PCR system for 50 cycles. An internal 18s rRNA control was included in every reaction for normalization. The threshold cycle was determined with software provided by the manufacturer, and expression was measured for each assay relative to the 18s rRNA internal standard (ΔCt). Assays were performed in triplicate (technical replicates) and each experiment was performed in at least two biological replicates. Relative expression between two cell populations was calculated by subtracting the ΔCt values ($\Delta\Delta Ct$). Fold differences were calculated as $2^{(\Delta\Delta Ct)}$ when $\Delta\Delta Ct > 0$ or $-(2^{(-\Delta\Delta Ct)})$ when $\Delta\Delta Ct < 0$. A true $\Delta\Delta Ct$ cannot be calculated when amplification is not detected for a given sample, so in those cases the maximum cycle number (50) was used to provide a lower boundary of fold change. Heat map data represent the fold change between two populations from at least two independent biological samples.

Gene Set Enrichment Analysis (GSEA)

The Gene Expression Omnibus (GEO) was searched for datasets that included stem cells together with a comparator population that could be considered differentiated. Imprinted gene lists were then constructed and a chip-to-chip method was used to obtain probes sets for all relevant chips. GSEA was used to examine the enrichment for the imprinted gene network together with the additional imprinted genes specific to HSCs. This analysis was performed with 1000 permutations for each test. We used phenotype permutations for all datasets except Goodell and Vogel [11,37], for which geneset permutations were required due to some samples having only two replicates.

Monoallelic expression of the imprinted genes in LT-HSCs

Male Castaneous mice (Cast) were crossed with female C57BL/6 mice (B6) so that the F1 progeny would be heterozygous at SNPs that differ between the two strains (Figure S1A). The Perlegen browser (<http://mouse.perlegen.com/mouse/browser.html>) was used to identify coding region single nucleotide polymorphisms (SNPs) between the Castaneous and C57BL/6 strains [58] and found SNPs in the coding regions of 3 imprinted genes (*Dlk1*, *Gtl2*, and *Peg3*). Castaneous SNPs were also reported in *H19* and *Igf2* and we adapted the SNUPE assays for these genes [59] using sequence-based detection. SNPs and primers are summarized in Table S2. Genomic DNA from both parental strains and F1 progeny were used to confirm detection of the different alleles (data not shown).

Supporting Information

Figure S1 Imprinted genes are monoallelically expressed in LT-HSCs. Certain imprinted genes become biallelically expressed in adult tissues, prompting us to determine the mode of expression of *Dlk1*, *Gtl2*, *H19*, *Igf2* and *Peg3* in LT-HSCs isolated from the F1 progeny of Castaneous and C57BL/6 parents. Analysis of coding SNPs allowed us to identify the parent-of-origin for the transcripts of these five genes, showing that the expressed allele was concordant with the reported imprinting pattern for each gene, confirming that monoallelic expression is generally retained in LT-HSCs. (A) Total RNA was isolated from LT-HSCs obtained from F1 progeny of Castaneous and C57BL/6 parents. cDNA fragments spanning these sites were amplified by PCR and sequenced. (B–F) Sequence traces for 5 members of the IGN were analyzed and found to be consistent with monoallelic expression of the transcripts, in agreement with the reported imprinting status of these genes. (TIF)

Figure S2 Downregulation of *Gtl2* in LT-HSCs correlates with decreased expression of miRNAs within the *Gtl2* locus. *Gtl2* is an intriguing maternally-expressed noncoding RNA that is thought to result in a very long transcript encompassing two microRNA clusters (*anti-Rtl1* and *Mirg*) and a C/D snoRNA cluster (*Rian*) [40,60,61]. Intriguingly, *Gtl2* displays a striking transcriptional profile in LT-HSCs following treatment with 5-FU (A) and was one of the most highly down-regulated genes in a

microarray transcriptional profiling experiment comparing wild type and *Lrg47*^{-/-} LT-HSCs [62]. Since *Gtl2* is thought to function as a host transcript for multiple miRNAs, we again used Q-RT-PCR to analyze expression of several mature miRNAs predicted to be processed from this long transcript (B). Given that *Gtl2* is strongly downregulated in *Lrg47*^{-/-} LT-HSCs, we compared expression of miRNAs in LT-HSCs from *Lrg47*^{-/-} mice and their wild-type littermate controls. Indeed, mmu-miR-127 and mmu-miR-337 (encoded within the *anti-Rtl1* transcript), both displayed decreased expression conservatively estimated at >1000-fold, while mmu-miR-134 and mmu-miR-494 (encoded within the *Mirg* cluster) showed >1000-fold and >100-fold decreased expression, respectively. These results support the idea that the *Gtl2* transcript serves as a substrate for miRNA processing in LT-HSCs and indicate that expression of several mature miRNAs in this region are exquisitely downregulated in the abnormally proliferative LT-HSCs from *Lrg47*^{-/-} mice. Three other miRNAs within this region (mmu-miR-673 and mmu-miR-370 flanking the core *anti-Rtl1* cluster, and mmu-miR-409 at the distal end of the *Mirg* cluster) did not exhibit statistically significant differences in expression, suggesting that there may be tissue-specific cleavage of mature miRNAs from this region. (A) Microarray profiling of gene expression in LT-HSCs following 5-FU treatment revealed that *Gtl2* demonstrates a characteristic pattern of down-regulation (maximal at day 4–6 post 5-FU) and recovery (by day 10). (B) The *Gtl2* non-coding transcript harbors two clusters of micro-RNAs (*anti-Rtl1* and *Mirg*) and a cluster of sno-RNAs (*Rian*). Real-time PCR analysis of miRNA expression in wild type and *Lrg47*^{-/-} LT-HSCs revealed strikingly decreased levels of four out of seven miRNAs examined. Fold change in *Lrg47*^{-/-} relative to wild-type is indicated for miRNAs with significant ($p < 0.05$) changes in expression. n.s. = non-significant. This schematic diagram of the *Gtl2* locus is modeled after Lin et al. (2003) [63].

(TIF)

Table S1 Summary descriptions of 10 core members of the IGN.

(PDF)

Table S2 SNPs used for analysis of monoallelic expression in F1 progeny of Castaneous male and C57BL/6 female mice.

(PDF)

Acknowledgments

The authors would like to thank Wendy Zheng and Ruth J. Lyons for technical assistance and Chris Threton for FACS assistance.

Author Contributions

Conceived and designed the experiments: JSB MAG. Performed the experiments: JSB KKL DCW CS NCB HN LJH DR RJD MAG. Analyzed the data: JSB KKL MAG. Contributed reagents/materials/analysis tools: HN RJD. Wrote the paper: JSB KKL MAG.

References

- Wilson A, Laurenti E, Oser G, van der Wath RC, Blanco-Bose W, et al. (2008) Hematopoietic stem cells reversibly switch from dormancy to self-renewal during homeostasis and repair. *Cell* 135: 1118–1129.
- Dhawan J, Rando TA (2005) Stem cells in postnatal myogenesis: molecular mechanisms of satellite cell quiescence, activation and replenishment. *Trends Cell Biol* 15: 666–673.
- Lavker RM, Sun TT (2000) Epidermal stem cells: properties, markers, and location. *Proc Natl Acad Sci U S A* 97: 13473–13475.
- Barker N, van Es JH, Kuipers J, Kujala P, van den Born M, et al. (2007) Identification of stem cells in small intestine and colon by marker gene *Lgr5*. *Nature* 449: 1003–1007.
- Mikkelsen TS, Ku M, Jaffe DB, Issac B, Lieberman E, et al. (2007) Genome-wide maps of chromatin state in pluripotent and lineage-committed cells. *Nature* 448: 553–560.
- Ramalho-Santos M, Yoon S, Matsuzaki Y, Mulligan RC, Melton DA (2002) “Stemness”: transcriptional profiling of embryonic and adult stem cells. *Science* 298: 597–600.
- Ivanova NB, Dimos JT, Schaniel C, Hackney JA, Moore KA, et al. (2002) A stem cell molecular signature. *Science* 298: 601–604.
- Fortunel NO, Otu HH, Ng HH, Chen J, Mu X, et al. (2003) Comment on “Stemness”: transcriptional profiling of embryonic and adult stem cells” and “a stem cell molecular signature”. *Science* 302: 393; author reply 393.

9. Blank U, Karlsson G, Karlsson S (2008) Signaling pathways governing stem-cell fate. *Blood* 111: 492–503.
10. Reya T, Clevers H (2005) Wnt signalling in stem cells and cancer. *Nature* 434: 843–850.
11. Chambers SM, Boles NC, Lin KY, Tierney MP, Bowman TV, et al. (2007) Hematopoietic Fingerprints: An Expression Database of Stem Cells and Their Progeny. *Cell Stem Cell* 1: 578–591.
12. Wood AJ, Oakey RJ (2006) Genomic imprinting in mammals: emerging themes and established theories. *PLoS Genet* 2: e147.
13. Tycko B, Morison IM (2002) Physiological functions of imprinted genes. *J Cell Physiol* 192: 245–258.
14. Jiang YH, Bressler J, Beaudet AL (2004) Epigenetics and human disease. *Annu Rev Genomics Hum Genet* 5: 479–510.
15. Morison IM, Ramsay JP, Spencer HG (2005) A census of mammalian imprinting. *Trends Genet* 21: 457–465.
16. Varrault A, Gueydan C, Delalbre A, Bellmann A, Houssami S, et al. (2006) *Zac1* regulates an imprinted gene network critically involved in the control of embryonic growth. *Dev Cell* 11: 711–722.
17. Lui JC, Finkelstein GP, Barnes KM, Baron J (2008) An imprinted gene network that controls mammalian somatic growth is down-regulated during postnatal growth deceleration in multiple organs. *Am J Physiol Regul Integr Comp Physiol* 295: R189–196.
18. Yan Z, Choi S, Liu X, Zhang M, Schageman JJ, et al. (2003) Highly coordinated gene regulation in mouse skeletal muscle regeneration. *J Biol Chem* 278: 8826–8836.
19. Dekel B, Metsuyanin S, Schmidt-Ott KM, Fridman E, Jacob-Hirsch J, et al. (2006) Multiple imprinted and stemness genes provide a link between normal and tumor progenitor cells of the developing human kidney. *Cancer Res* 66: 6040–6049.
20. Gabory A, Ripoche MA, Le Digarcher A, Watrin F, Ziyat A, et al. (2009) H19 acts as a trans regulator of the imprinted gene network controlling growth in mice. *Development* 136: 3413–3421.
21. Finkelstein GP, Forcinito P, Lui JC, Barnes KM, Marino R, et al. (2009) An extensive genetic program occurring during postnatal growth in multiple tissues. *Endocrinology* 150: 1791–1800.
22. Scandura JM, Bocconi P, Massague J, Nimer SD (2004) Transforming growth factor beta-induced cell cycle arrest of human hematopoietic cells requires p57KIP2 up-regulation. *Proc Natl Acad Sci U S A* 101: 15231–15236.
23. Tessema M, Langer F, Bock O, Seltsam A, Metzger K, et al. (2005) Down-regulation of the IGF-2/H19 locus during normal and malignant hematopoiesis is independent of the imprinting pattern. *Int J Oncol* 26: 499–507.
24. Wu Q, Kawahara M, Kono T (2008) Synergistic role of *Igf2* and *Dlk1* in fetal liver development and hematopoiesis in bi-maternal mice. *J Reprod Dev* 54: 177–182.
25. Kaneko-Ishino T, Kuroiwa Y, Miyoshi N, Kohda T, Suzuki R, et al. (1995) *Peg1/Mest* imprinted gene on chromosome 6 identified by cDNA subtraction hybridization. *Nat Genet* 11: 52–59.
26. Kubota Y, Osawa M, Jakt LM, Yoshikawa K, Nishikawa S (2009) *Necdin* restricts proliferation of hematopoietic stem cells during hematopoietic regeneration. *Blood* 114: 4383–4392.
27. Hernandez L, Kozlov S, Piras G, Stewart CL (2003) Paternal and maternal genomes confer opposite effects on proliferation, cell-cycle length, senescence, and tumor formation. *Proc Natl Acad Sci U S A* 100: 13344–13349.
28. Holm TM, Jackson-Grusby L, Brambrink T, Yamada Y, Rideout WM, 3rd, et al. (2005) Global loss of imprinting leads to widespread tumorigenesis in adult mice. *Cancer Cell* 8: 275–285.
29. Pantoja C, de Los Rios L, Matheu A, Antequera F, Serrano M (2005) Inactivation of imprinted genes induced by cellular stress and tumorigenesis. *Cancer Res* 65: 26–33.
30. Nunez C, Bashein AM, Brunet CL, Hoyland JA, Freemont AJ, et al. (2000) Expression of the imprinted tumour-suppressor gene H19 is tightly regulated during normal haematopoiesis and is reduced in haematopoietic precursors of patients with the myeloproliferative disease polycythaemia vera. *J Pathol* 190: 61–68.
31. Sakajiri S, O'Kelly J, Yin D, Miller CW, Hofmann WK, et al. (2005) *Dlk1* in normal and abnormal hematopoiesis. *Leukemia* 19: 1404–1410.
32. Venezia TA, Merchant AA, Ramos CA, Whitehouse NL, Young AS, et al. (2004) Molecular signatures of proliferation and quiescence in hematopoietic stem cells. *PLoS Biol* 2: e301.
33. Feng CG, Weksberg DC, Taylor GA, Sher A, Goodell MA (2008) The p47 GTPase *Lrg-47 (Irgm1)* links host defense and hematopoietic stem cell proliferation. *Cell Stem Cell* 2: 83–89.
34. Stadtfeld M, Apostolou E, Akutsu H, Fukuda A, Follett P, et al. (2010) Aberrant silencing of imprinted genes on chromosome 12qF1 in mouse induced pluripotent stem cells. *Nature* 465: 175–181.
35. Kiel MJ, Yilmaz OH, Iwashita T, Terhorst C, Morrison SJ (2005) SLAM family receptors distinguish hematopoietic stem and progenitor cells and reveal endothelial niches for stem cells. *Cell* 121: 1109–1121.
36. Majeti R, Becker MW, Tian Q, Lee TL, Yan X, et al. (2009) Dysregulated gene expression networks in human acute myelogenous leukemia stem cells. *Proc Natl Acad Sci U S A* 106: 3396–3401.
37. Ohyama M, Terunuma A, Tock CL, Radonovich MF, Pise-Masison CA, et al. (2006) Characterization and isolation of stem cell-enriched human hair follicle bulge cells. *J Clin Invest* 116: 249–260.
38. Perez-Iratxeta C, Palidwor G, Porter CJ, Sanche NA, Huska MR, et al. (2005) Study of stem cell function using microarray experiments. *FEBS Lett* 579: 1795–1801.
39. Cai X, Cullen BR (2007) The imprinted H19 noncoding RNA is a primary microRNA precursor. *Rna* 13: 313–316.
40. Seitz H, Royo H, Bortolin ML, Lin SP, Ferguson-Smith AC, et al. (2004) A large imprinted microRNA gene cluster at the mouse *Dlk1-Gd2* domain. *Genome Res* 14: 1741–1748.
41. Liu Y, Elf SE, Miyata Y, Sashida G, Huang G, et al. (2009) p53 regulates hematopoietic stem cell quiescence. *Cell Stem Cell* 4: 37–48.
42. Relaix F, Wei X, Li W, Pan J, Lin Y, et al. (2000) Pw1/Peg3 is a potential cell death mediator and cooperates with *Siah1a* in p53-mediated apoptosis. *Proc Natl Acad Sci U S A* 97: 2105–2110.
43. Huang SM, Schonthal AH, Stallcup MR (2001) Enhancement of p53-dependent gene activation by the transcriptional coactivator *Zac1*. *Oncogene* 20: 2134–2143.
44. Taniura H, Matsumoto K, Yoshikawa K (1999) Physical and functional interactions of neuronal growth suppressor *neclin* with p53. *J Biol Chem* 274: 16242–16248.
45. Zhou Y, Zhong Y, Wang Y, Zhang X, Batista DL, et al. (2007) Activation of p53 by MEG3 non-coding RNA. *J Biol Chem* 282: 24731–24742.
46. Sandhu KS, Shi C, Sjolinder M, Zhao Z, Gondor A, et al. (2009) Nonallelic translocation of multiple imprinted loci is organized by the H19 imprinting control region during germline development. *Genes Dev* 23: 2598–2603.
47. Zhao Z, Tavoosidana G, Sjolinder M, Gondor A, Mariano P, et al. (2006) Circular chromosome conformation capture (4C) uncovers extensive networks of epigenetically regulated intra- and interchromosomal interactions. *Nat Genet* 38: 1341–1347.
48. Kernohan KD, Jiang Y, Tremblay DC, Bonvissuto AC, Eubanks JH, et al. (2010) *ATRX* partners with cohesin and McCP2 and contributes to developmental silencing of imprinted genes in the brain. *Dev Cell* 18: 191–202.
49. Zacharek SJ, Fillmore CM, Lau AN, Gludish DW, Chou A, et al. (2011) Lung stem cell self-renewal relies on *Bmi-1* dependent control of expression at imprinted loci. *Cell Stem Cell* In Press.
50. Beaudet AL, Jiang YH (2002) A rheostat model for a rapid and reversible form of imprinting-dependent evolution. *Am J Hum Genet* 70: 1389–1397.
51. Besson V, Smeriglio P, Wegener A, Relaix F, Nait Oumesmar B, et al. (2011) Pw1 gene/paternally expressed gene 3 (Pw1/Peg3) identifies multiple adult stem and progenitor cell populations. *Proc Natl Acad Sci U S A* 108: 11470–11475.
52. Sato T, Vries RG, Snippert HJ, van de Wetering M, Barker N, et al. (2009) Single *Lgr5* stem cells build crypt-villus structures in vitro without a mesenchymal niche. *Nature* 459: 262–265.
53. Schulz R, Woodfine K, Menhenniott TR, Bourc'his D, Bestor T, et al. (2008) WAMIDEX: a web atlas of murine genomic imprinting and differential expression. *Epigenetics: official journal of the DNA Methylation Society* 3: 89–96.
54. McKinney-Freeman SL, Jackson KA, Camargo FD, Ferrari G, Mavilio F, et al. (2002) Muscle-derived hematopoietic stem cells are hematopoietic in origin. *Proc Natl Acad Sci U S A* 99: 1341–1346.
55. Challen GA, Boles N, Lin KK, Goodell MA (2009) Mouse hematopoietic stem cell identification and analysis. *Cytometry A* 75: 14–24.
56. Kondo M, Weissman IL, Akashi K (1997) Identification of clonogenic common lymphoid progenitors in mouse bone marrow. *Cell* 91: 661–672.
57. Akashi K, Traver D, Miyamoto T, Weissman IL (2000) A clonogenic common myeloid progenitor that gives rise to all myeloid lineages. *Nature* 404: 193–197.
58. Frazer KA, Eskin E, Kang HM, Bogue MA, Hinds DA, et al. (2007) A sequence-based variation map of 8.27 million SNPs in inbred mouse strains. *Nature* 448: 1050–1053.
59. Szabo PE, Mann JR (1995) Biallelic expression of imprinted genes in the mouse germ line: implications for erasure, establishment, and mechanisms of genomic imprinting. *Genes & development* 9: 1857–1868.
60. Kircher M, Bock C, Paulsen M (2008) Structural conservation versus functional divergence of maternally expressed microRNAs in the *Dlk1/Gd2* imprinting region. *BMC Genomics* 9: 346.
61. Zhang L, Volinia S, Bonome T, Calin GA, Greshock J, et al. (2008) Genomic and epigenetic alterations deregulate microRNA expression in human epithelial ovarian cancer. *Proc Natl Acad Sci U S A* 105: 7004–7009.
62. King KY, Baldrige MT, Weksberg DC, Chambers SM, Lukov GL, et al. (2011) *Irgm1* protects hematopoietic stem cells by negative regulation of interferon signaling. *Blood*.
63. Lin SP, Youngson N, Takada S, Seitz H, Reik W, et al. (2003) Asymmetric regulation of imprinting on the maternal and paternal chromosomes at the *Dlk1-Gd2* imprinted cluster on mouse chromosome 12. *Nature genetics* 35: 97–102.

Table S1: Summary descriptions of ten core IGN members analyzed in this study

Imprinted genes coexpressed in adult stem cells

Gene	Expressed allele	Gene function	Mouse phenotype	Putative role in hematopoiesis or hematopoietic malignancy	Refs
Cdkn1c	Maternal	Encodes p57(Kip2), a cyclin-dependent kinase inhibitor. In vitro evidence suggests that p57 inhibits the activity of specific cyclin/CDK complexes. Additional functions include regulation of the cytoskeleton and promotion of apoptosis.	KO: Multiple malformations, neonatal lethal	Highly expressed in quiescent LT-HSCs but downregulated in proliferative short-term HSCs. In human CD34+ cord blood cells, <i>CDKN1C</i> is induced by TGF-beta and is critical for TGF-beta dependent cell cycle arrest.	[1,2,3,4,5,6]
Dlk1 (Pref1)	Paternal	Encodes a delta-like ligand that can be either soluble or membrane bound. It is thought to inhibit Notch signaling and plays a role in regulating differentiation of adipocytes and mesenchymal stem cells.	KO: Growth restriction, accelerated adiposity OE: "Callipyge" phenotype	Expressed in human CD34 ⁺ hematopoietic stem cells and upregulated in some cases of hematopoietic malignancy, particularly myelodysplasia and myeloid leukemia. Expressed by stromal cells that support hematopoiesis, suggesting that it plays a role in the interactions between stem cells and their niche.	[7,8,9,10,11,12,13]
Grb10	Maternal	Adapter protein for receptor tyrosine kinases, with roles in insulin and insulin-like growth factor signaling. Conflicting reports regarding repression or enhancement of receptor signaling, likely dependent on cellular context.	KO: Overgrowth, increased muscle mass / reduced adiposity, altered glucose homeostasis	Binds to the chimeric BCR-ABL tyrosine kinase expressed in chronic myelogenous leukemia. May be involved signaling from the c-Kit tyrosine kinase receptor.	[14,15,16,17,18]
Gtl2 (Meg3)	Maternal	Non-coding RNA that harbors two miRNA clusters and a snoRNA cluster. Part of a large reciprocally imprinted domain including <i>Dlk1</i> , <i>anti-Rtl1</i> , and <i>Dio3</i> . Several miRNAs from this cluster are downregulated in ovarian cancer, suggesting a possible tumor suppressor role.	KO: Depends on parent of origin	?	[19,20,21,22,23,24]
H19	Maternal	Non-coding RNA that harbors miR-675. The precise targets are unclear. Likely functions as a tumor suppressor, but conflicting reports. H19 transcript is upregulated during cell proliferation (possibly due to reduced miRNA processing).	KO: Confounded by effects on Igf2 expression; OE: Repressed growth	Downregulated in CD34+/CD33- bone marrow cells from patients with Polycythemia vera and downregulated in several different leukemias and myeloproliferative disorders.	[25,26,27,28,29,30,31,32,33]
Igf2	Paternal	Secreted growth factor that promotes fetal growth. Likely involved in both paracrine/endocrine signaling. Upregulated in many different cancers, in many cases due to loss of imprinting.	KO: Growth restriction, complicated by effects on placental function OE: Overgrowth, multiple malformations	Growth factor for fetal hematopoietic stem cells. Downregulated in several different leukemias.	[33,34,35,36,37,38,39]
Mest (Peg1)	Paternal	Expressed in embryonic mesoderm, mesodermal derivatives, and the central nervous system. May have enzymatic function as an epoxide hydrolase based on protein homology. Upregulated in obese adipose tissue.	KO: Intrauterine growth restriction	?	[40,41,42]
Ndn	Paternal	MAGE protein, initially discovered in post-mitotic neurons thought to arrest growth and regulate apoptosis. Multiple biochemical interactions. Implicated in differentiation of neuronal and mesenchymal tissues.	KO: Conflicting data, early post-natal lethality due to respiratory failure, possible strain differences	Likely transcriptional target of p53 and plays modest role in regulating HSC quiescence, primarily during regeneration.	[43,44,45,46,47,48,49,50,51,52]
Peg3 (Pw1)	Paternal	Zinc-finger transcription factor expressed in the embryonic mesoderm and brain, plays a role in TNF-alpha/NF-kB signaling and p53-mediated apoptosis. Implicated in muscle stem cell function.	KO: Intrauterine growth restriction	?	[53,54,55,56,57]
Plagl1 (Zac1 / Lot1)	Paternal	Zinc-finger transcription factor that inhibits the growth of tumor cells in vitro through repression of cell cycle and induction of apoptosis. Frequently deleted or down-regulated in cancer, co-regulates p53-responsive promoters.	KO: Intrauterine growth restriction	?	[58,59,60,61,62,63]

References associated with Table S1

1. Pateras IS, Apostolopoulou K, Niforou K, Kotsinas A, Gorgoulis VG (2009) p57KIP2: "Kip"ing the cell under control. *Molecular cancer research : MCR* 7: 1902-1919.
2. Vlachos P, Joseph B (2009) The Cdk inhibitor p57(Kip2) controls LIM-kinase 1 activity and regulates actin cytoskeleton dynamics. *Oncogene* 28: 4175-4188.
3. Zhang P, Liegeois NJ, Wong C, Finegold M, Hou H, et al. (1997) Altered cell differentiation and proliferation in mice lacking p57KIP2 indicates a role in Beckwith-Wiedemann syndrome. *Nature* 387: 151-158.
4. Passegue E, Wagers AJ, Giuriato S, Anderson WC, Weissman IL (2005) Global analysis of proliferation and cell cycle gene expression in the regulation of hematopoietic stem and progenitor cell fates. *The Journal of experimental medicine* 202: 1599-1611.
5. Umemoto T, Yamato M, Nishida K, Yang J, Tano Y, et al. (2005) p57Kip2 is expressed in quiescent mouse bone marrow side population cells. *Biochemical and biophysical research communications* 337: 14-21.
6. Scandura JM, Boccuni P, Massague J, Nimer SD (2004) Transforming growth factor beta-induced cell cycle arrest of human hematopoietic cells requires p57KIP2 up-regulation. *Proc Natl Acad Sci U S A* 101: 15231-15236.
7. Baladron V, Ruiz-Hidalgo MJ, Nueda ML, Diaz-Guerra MJ, Garcia-Ramirez JJ, et al. (2005) dlk acts as a negative regulator of Notch1 activation through interactions with specific EGF-like repeats. *Experimental cell research* 303: 343-359.
8. Abdallah BM, Boissy P, Tan Q, Dahlgaard J, Traustadottir GA, et al. (2007) dlk1/FA1 regulates the function of human bone marrow mesenchymal stem cells by modulating gene expression of pro-inflammatory cytokines and immune response-related factors. *The Journal of biological chemistry* 282: 7339-7351.
9. Davis E, Jensen CH, Schroder HD, Farnir F, Shay-Hadfield T, et al. (2004) Ectopic expression of DLK1 protein in skeletal muscle of padumnal heterozygotes causes the callipyge phenotype. *Current biology : CB* 14: 1858-1862.
10. Nueda ML, Baladron V, Sanchez-Solana B, Ballesteros MA, Laborda J (2007) The EGF-like protein dlk1 inhibits notch signaling and potentiates adipogenesis of mesenchymal cells. *Journal of molecular biology* 367: 1281-1293.
11. Moon YS, Smas CM, Lee K, Villena JA, Kim KH, et al. (2002) Mice lacking paternally expressed Pref-1/Dlk1 display growth retardation and accelerated adiposity. *Molecular and cellular biology* 22: 5585-5592.
12. Sakajiri S, O'Kelly J, Yin D, Miller CW, Hofmann WK, et al. (2005) Dlk1 in normal and abnormal hematopoiesis. *Leukemia* 19: 1404-1410.
13. Qi X, Chen Z, Liu D, Cen J, Gu M (2008) Expression of Dlk1 gene in myelodysplastic syndrome determined by microarray, and its effects on leukemia cells. *International journal of molecular medicine* 22: 61-68.
14. Riedel H (2004) Grb10 exceeding the boundaries of a common signaling adapter. *Frontiers in bioscience : a journal and virtual library* 9: 603-618.
15. Charalambous M, Smith FM, Bennett WR, Crew TE, Mackenzie F, et al. (2003) Disruption of the imprinted Grb10 gene leads to disproportionate overgrowth by an Igf2-independent mechanism. *Proceedings of the National Academy of Sciences of the United States of America* 100: 8292-8297.

16. Smith FM, Holt LJ, Garfield AS, Charalambous M, Koumanov F, et al. (2007) Mice with a disruption of the imprinted Grb10 gene exhibit altered body composition, glucose homeostasis, and insulin signaling during postnatal life. *Molecular and cellular biology* 27: 5871-5886.
17. Bai RY, Jahn T, Schrem S, Munzert G, Weidner KM, et al. (1998) The SH2-containing adapter protein GRB10 interacts with BCR-ABL. *Oncogene* 17: 941-948.
18. Jahn T, Seipel P, Urschel S, Peschel C, Duyster J (2002) Role for the adaptor protein Grb10 in the activation of Akt. *Molecular and cellular biology* 22: 979-991.
19. Cavaille J, Seitz H, Paulsen M, Ferguson-Smith AC, Bachellerie JP (2002) Identification of tandemly-repeated C/D snoRNA genes at the imprinted human 14q32 domain reminiscent of those at the Prader-Willi/Angelman syndrome region. *Human molecular genetics* 11: 1527-1538.
20. Seitz H, Royo H, Bortolin ML, Lin SP, Ferguson-Smith AC, et al. (2004) A large imprinted microRNA gene cluster at the mouse Dlk1-Gtl2 domain. *Genome Res* 14: 1741-1748.
21. Kircher M, Bock C, Paulsen M (2008) Structural conservation versus functional divergence of maternally expressed microRNAs in the Dlk1/Gtl2 imprinting region. *BMC genomics* 9: 346.
22. Zhang L, Volinia S, Bonome T, Calin GA, Greshock J, et al. (2008) Genomic and epigenetic alterations deregulate microRNA expression in human epithelial ovarian cancer. *Proceedings of the National Academy of Sciences of the United States of America* 105: 7004-7009.
23. Steshina EY, Carr MS, Glick EA, Yevtodiyyenko A, Appelbe OK, et al. (2006) Loss of imprinting at the Dlk1-Gtl2 locus caused by insertional mutagenesis in the Gtl2 5' region. *BMC genetics* 7: 44.
24. Takahashi N, Okamoto A, Kobayashi R, Shirai M, Obata Y, et al. (2009) Deletion of Gtl2, imprinted non-coding RNA, with its differentially methylated region induces lethal parent-origin-dependent defects in mice. *Human molecular genetics* 18: 1879-1888.
25. Hao Y, Crenshaw T, Moulton T, Newcomb E, Tycko B (1993) Tumour-suppressor activity of H19 RNA. *Nature* 365: 764-767.
26. Ariel I, Ayesh S, Perlman EJ, Pizov G, Tanos V, et al. (1997) The product of the imprinted H19 gene is an oncofetal RNA. *Molecular pathology* : MP 50: 34-44.
27. Cai X, Cullen BR (2007) The imprinted H19 noncoding RNA is a primary microRNA precursor. *Rna* 13: 313-316.
28. Looijenga LH, Verkerk AJ, De Groot N, Hochberg AA, Oosterhuis JW (1997) H19 in normal development and neoplasia. *Molecular reproduction and development* 46: 419-439.
29. Yamamoto Y, Nishikawa Y, Tokairin T, Omori Y, Enomoto K (2004) Increased expression of H19 non-coding mRNA follows hepatocyte proliferation in the rat and mouse. *Journal of hepatology* 40: 808-814.
30. Milligan L, Antoine E, Bisbal C, Weber M, Brunel C, et al. (2000) H19 gene expression is up-regulated exclusively by stabilization of the RNA during muscle cell differentiation. *Oncogene* 19: 5810-5816.
31. Nunez C, Bashein AM, Brunet CL, Hoyland JA, Freemont AJ, et al. (2000) Expression of the imprinted tumour-suppressor gene H19 is tightly regulated during normal haematopoiesis and is reduced in haematopoietic precursors of patients with the myeloproliferative disease polycythaemia vera. *J Pathol* 190: 61-68.

32. Bock O, Schlue J, Kreipe H (2003) Reduced expression of H19 in bone marrow cells from chronic myeloproliferative disorders. *Leukemia : official journal of the Leukemia Society of America, Leukemia Research Fund, UK* 17: 815-816.
33. Tessema M, Langer F, Bock O, Seltsam A, Metzsig K, et al. (2005) Down-regulation of the IGF-2/H19 locus during normal and malignant hematopoiesis is independent of the imprinting pattern. *Int J Oncol* 26: 499-507.
34. Chao W, D'Amore PA (2008) IGF2: epigenetic regulation and role in development and disease. *Cytokine & growth factor reviews* 19: 111-120.
35. Rodriguez S, Gaunt TR, Day IN (2007) Molecular genetics of human growth hormone, insulin-like growth factors and their pathways in common disease. *Human genetics* 122: 1-21.
36. Kaneda A, Feinberg AP (2005) Loss of imprinting of IGF2: a common epigenetic modifier of intestinal tumor risk. *Cancer research* 65: 11236-11240.
37. Constanica M, Hemberger M, Hughes J, Dean W, Ferguson-Smith A, et al. (2002) Placental-specific IGF-II is a major modulator of placental and fetal growth. *Nature* 417: 945-948.
38. Sun FL, Dean WL, Kelsey G, Allen ND, Reik W (1997) Transactivation of Igf2 in a mouse model of Beckwith-Wiedemann syndrome. *Nature* 389: 809-815.
39. Zhang CC, Lodish HF (2004) Insulin-like growth factor 2 expressed in a novel fetal liver cell population is a growth factor for hematopoietic stem cells. *Blood* 103: 2513-2521.
40. Kaneko-Ishino T, Kuroiwa Y, Miyoshi N, Kohda T, Suzuki R, et al. (1995) Peg1/Mest imprinted gene on chromosome 6 identified by cDNA subtraction hybridization. *Nat Genet* 11: 52-59.
41. Kamei Y, Suganami T, Kohda T, Ishino F, Yasuda K, et al. (2007) Peg1/Mest in obese adipose tissue is expressed from the paternal allele in an isoform-specific manner. *FEBS letters* 581: 91-96.
42. Lefebvre L, Viville S, Barton SC, Ishino F, Keverne EB, et al. (1998) Abnormal maternal behaviour and growth retardation associated with loss of the imprinted gene Mest. *Nature genetics* 20: 163-169.
43. Hayashi Y, Matsuyama K, Takagi K, Sugiura H, Yoshikawa K (1995) Arrest of cell growth by necdin, a nuclear protein expressed in postmitotic neurons. *Biochemical and biophysical research communications* 213: 317-324.
44. Barker PA, Salehi A (2002) The MAGE proteins: emerging roles in cell cycle progression, apoptosis, and neurogenetic disease. *Journal of neuroscience research* 67: 705-712.
45. Brunelli S, Tagliafico E, De Angelis FG, Tonlorenzi R, Baesso S, et al. (2004) Msx2 and necdin combined activities are required for smooth muscle differentiation in mesoangioblast stem cells. *Circulation research* 94: 1571-1578.
46. Tseng YH, Butte AJ, Kokkotou E, Yechoor VK, Taniguchi CM, et al. (2005) Prediction of preadipocyte differentiation by gene expression reveals role of insulin receptor substrates and necdin. *Nature cell biology* 7: 601-611.
47. Deponti D, Francois S, Baesso S, Sciorati C, Innocenzi A, et al. (2007) Necdin mediates skeletal muscle regeneration by promoting myoblast survival and differentiation. *The Journal of cell biology* 179: 305-319.
48. Kurita M, Kuwajima T, Nishimura I, Yoshikawa K (2006) Necdin downregulates CDC2 expression to attenuate neuronal apoptosis. *The Journal of neuroscience : the official journal of the Society for Neuroscience* 26: 12003-12013.

49. Tsai TF, Armstrong D, Beaudet AL (1999) Necdin-deficient mice do not show lethality or the obesity and infertility of Prader-Willi syndrome. *Nature genetics* 22: 15-16.
50. Gerard M, Hernandez L, Wevrick R, Stewart CL (1999) Disruption of the mouse necdin gene results in early post-natal lethality. *Nature genetics* 23: 199-202.
51. Liu Y, Elf SE, Miyata Y, Sashida G, Huang G, et al. (2009) p53 regulates hematopoietic stem cell quiescence. *Cell Stem Cell* 4: 37-48.
52. Kubota Y, Osawa M, Jakt LM, Yoshikawa K, Nishikawa S (2009) Necdin restricts proliferation of hematopoietic stem cells during hematopoietic regeneration. *Blood* 114: 4383-4392.
53. Relaix F, Weng X, Marazzi G, Yang E, Copeland N, et al. (1996) Pw1, a novel zinc finger gene implicated in the myogenic and neuronal lineages. *Developmental biology* 177: 383-396.
54. Relaix F, Wei XJ, Wu X, Sassoon DA (1998) Peg3/Pw1 is an imprinted gene involved in the TNF-NFkappaB signal transduction pathway. *Nature genetics* 18: 287-291.
55. Relaix F, Wei X, Li W, Pan J, Lin Y, et al. (2000) Pw1/Peg3 is a potential cell death mediator and cooperates with Siah1a in p53-mediated apoptosis. *Proc Natl Acad Sci U S A* 97: 2105-2110.
56. Deng Y, Wu X (2000) Peg3/Pw1 promotes p53-mediated apoptosis by inducing Bax translocation from cytosol to mitochondria. *Proceedings of the National Academy of Sciences of the United States of America* 97: 12050-12055.
57. Nicolas N, Marazzi G, Kelley K, Sassoon D (2005) Embryonic deregulation of muscle stress signaling pathways leads to altered postnatal stem cell behavior and a failure in postnatal muscle growth. *Developmental biology* 281: 171-183.
58. Spengler D, Villalba M, Hoffmann A, Pantaloni C, Houssami S, et al. (1997) Regulation of apoptosis and cell cycle arrest by Zac1, a novel zinc finger protein expressed in the pituitary gland and the brain. *The EMBO journal* 16: 2814-2825.
59. Varrault A, Ciani E, Apiou F, Bilanges B, Hoffmann A, et al. (1998) hZAC encodes a zinc finger protein with antiproliferative properties and maps to a chromosomal region frequently lost in cancer. *Proceedings of the National Academy of Sciences of the United States of America* 95: 8835-8840.
60. Varrault A, Gueydan C, Delalbre A, Bellmann A, Houssami S, et al. (2006) Zac1 regulates an imprinted gene network critically involved in the control of embryonic growth. *Dev Cell* 11: 711-722.
61. Abdollahi A (2007) LOT1 (ZAC1/PLAGL1) and its family members: mechanisms and functions. *Journal of cellular physiology* 210: 16-25.
62. Basyuk E, Coulon V, Le Digarcher A, Coisy-Quivy M, Moles JP, et al. (2005) The candidate tumor suppressor gene ZAC is involved in keratinocyte differentiation and its expression is lost in basal cell carcinomas. *Molecular cancer research : MCR* 3: 483-492.
63. Huang SM, Schonthal AH, Stallcup MR (2001) Enhancement of p53-dependent gene activation by the transcriptional coactivator Zac1. *Oncogene* 20: 2134-2143.